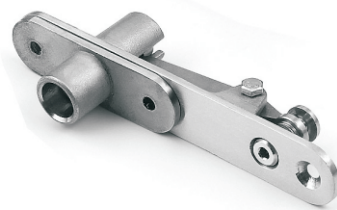
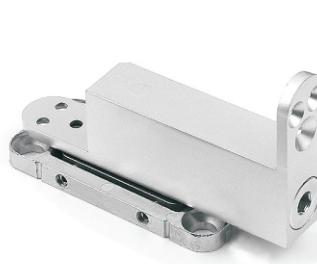


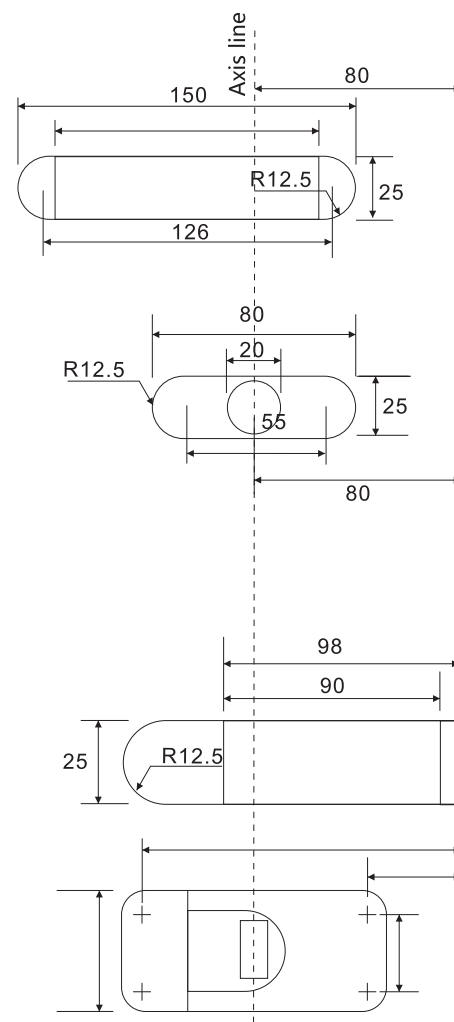
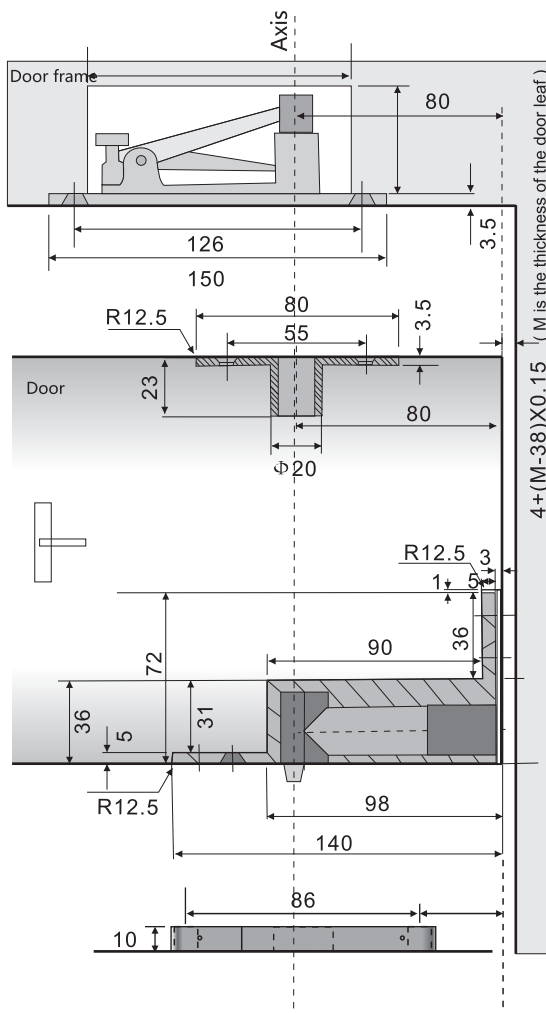
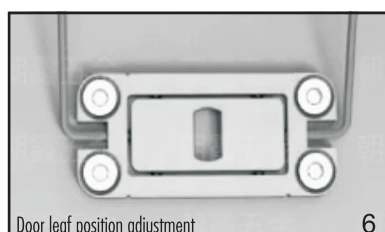
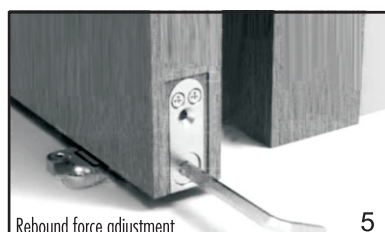
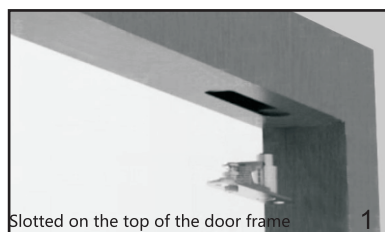
Self-Close Pivot Hinge

With Adjustable Closing Force

- Door Thickness: 32~55mm
- Door High: 1500~2200mm
- Door Width: Max 950mm
- Door Weight: 60Kg



Hold-Open angel between 90 ~270



Installation Method:

- Slot on the door frame and door leaf according to the slot size, and install each part of the A. product at the slot
- Figure 1: After the components are installed, the shaft needs to be adjusted to the highest point with a wrench
- Picture 3: The parts are slotted and 3mm gap is reserved as shown in the above picture for the installation of stainless steel decorative panels
- Figure 4: The parts are fixed with expansion tubes
- Install the door leaf and lower the shaft of Figure 1 to the shaft of Figure 2
- Figure 5, Figure 6: Use a wrench to fine-tune the rebound force and position of the door leaf to open and close smoothly
- Cover with stainless steel decorative board, installation is complete

Door leaf adjustment range:

Back and Forward: -2 ~ +2MM

Left and right: -2 ~ +2MM

